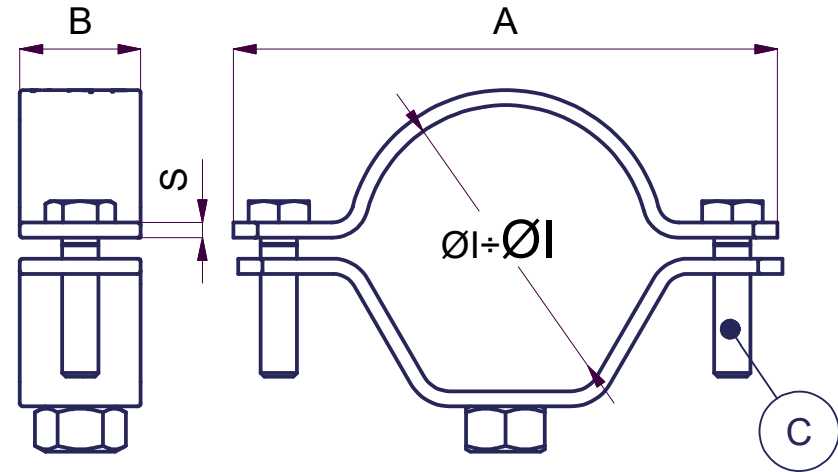
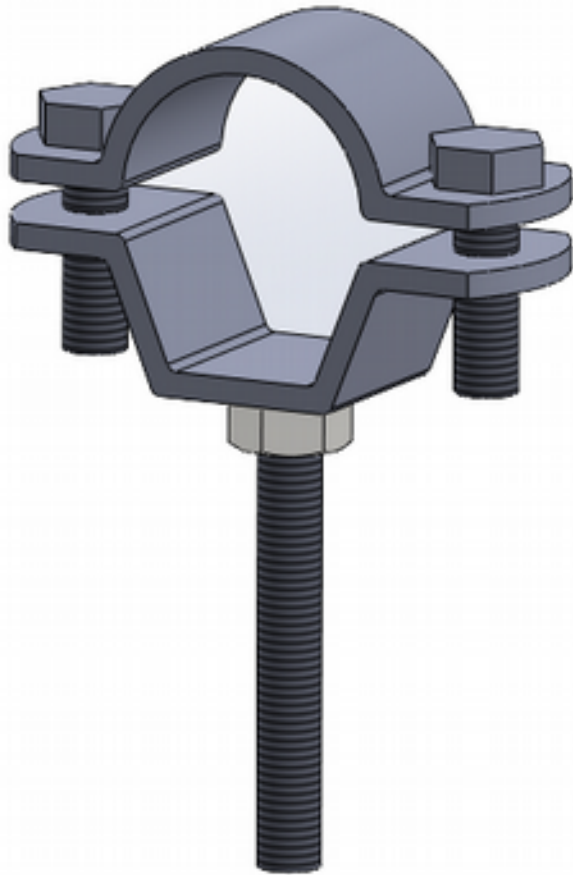






SISTEMI DI SUPPORTO – UNTERSTÜTZENDE SYSTEME

PIPING SUPPORT SYSTEMS

Collari NV



codice	∅ Tubo	∅I ÷ ∅I [mm]	A ± 2 [mm]	B [mm]	S [mm]	C [mm]					Fv [Kg]	Note
NV.1	3/8"	16÷20	54	20	2,5	M6x20	M8	M8 x 80	10 x 50	10	350	
NV.2	1/2"	20÷24	60	20	2,5	M6x20	M8	M8 x 80	10 x 50	10	350	
NV.3	3/4"	25÷30	65	20	2,5	M6x20	M8	M8 x 80	10 x 50	10	350	
NV.4	1"	32÷36	73	20	2,5	M6x20	M8	M8 x 80	10 x 50	10	350	
NV.5	1.1/4"	38÷44	86	20	2,5	M6x20	M8	M8 x 80	10 x 50	10	350	
NV.6	1.1/2"	46÷50	91	20	2,5	M6x20	M8	M8 x 80	10 x 50	10	350	
NV.7	2"	58÷62	106	20	2,5	M6x20	M8	M8 x 80	10 x 50	10	350	
NV.8	2.1/2"	74÷80	122	30	2,5	M6x20	M10	M10 x 100	12 x 60	12	350	(*)
NV.9	3"	84÷89	137	30	2,5	M6x20	M10	M10 x 100	12 x 60	12	350	(*)
NV.10	4"	112÷118	164	30	2,5	M6x20	M10	M10 x 100	12 x 60	12	350	(*)
NV.11	5"	134÷138	192	30	2,5	M6x20	M10	M10 x 100	12 x 60	12	350	(*)
NV.12	6"	164÷172	218	30	2,5	M6x20	M10	M10 x 100	12 x 60	12	400	(*)
NV.13	8"	219÷225	279	30	2,5	M6x20	M 1 0	M10 x 100	12 x 60	12	400	(*)

Vite a doppio filetto e tassello plastico a parte

(*)- Base collare di forma circolare

Fv - Carico raccomandato di trazione.